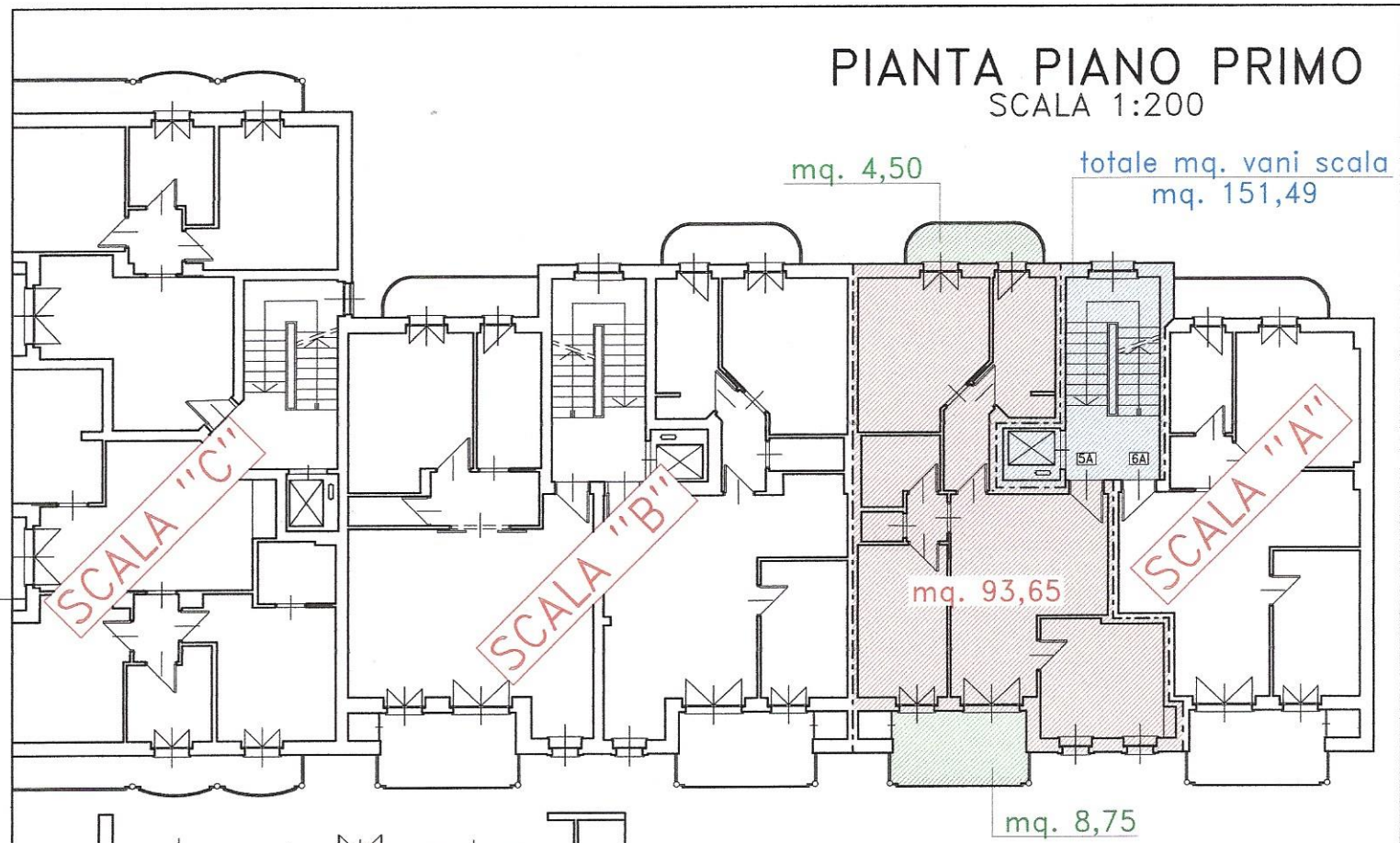


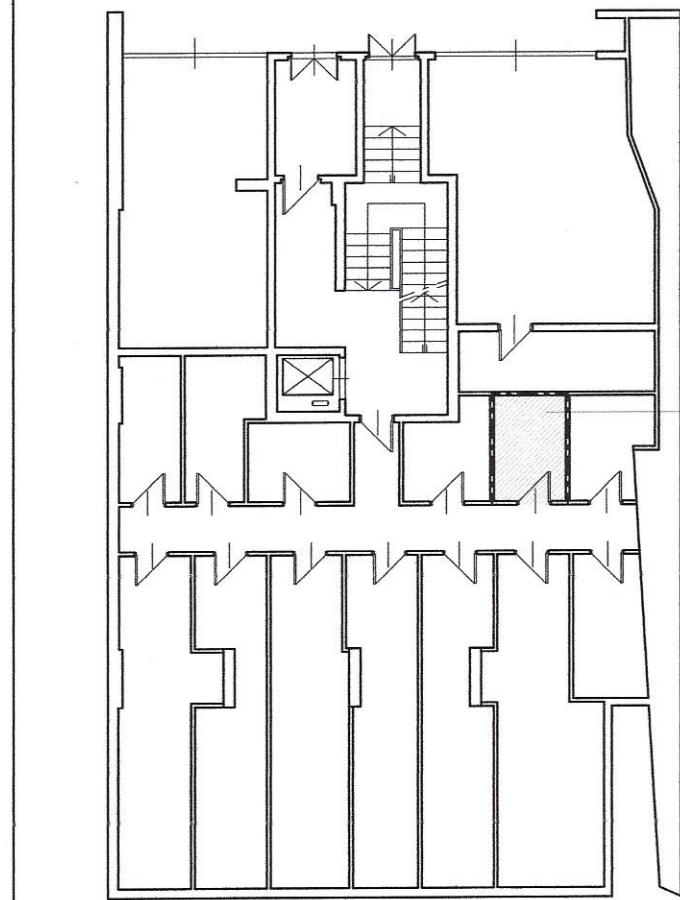
# PIANTA PIANO PRIMO

SCALA 1:200



# PIANTA PIANO PRIMO SOTTERRANEO

SCALA 1:200



## Superficie utile

Vano	Sup. utile (mq.)
camera	14,95
bagno	7,45
dis.	3,60
bagno	4,20
rip.	1,05
dis.	1,60
camera	11,35
soggiorno	21,70
cucina	12,00
<b>Totale mq.</b>	<b>77,90</b>

mq. 5,90